

BAT54WA/AWA/CWA/SWA

Rev.A Aug.-2022



DATA SHEET

SOT-323



极限参数 / Absolute Maximum Ratings(Ta=25°C)

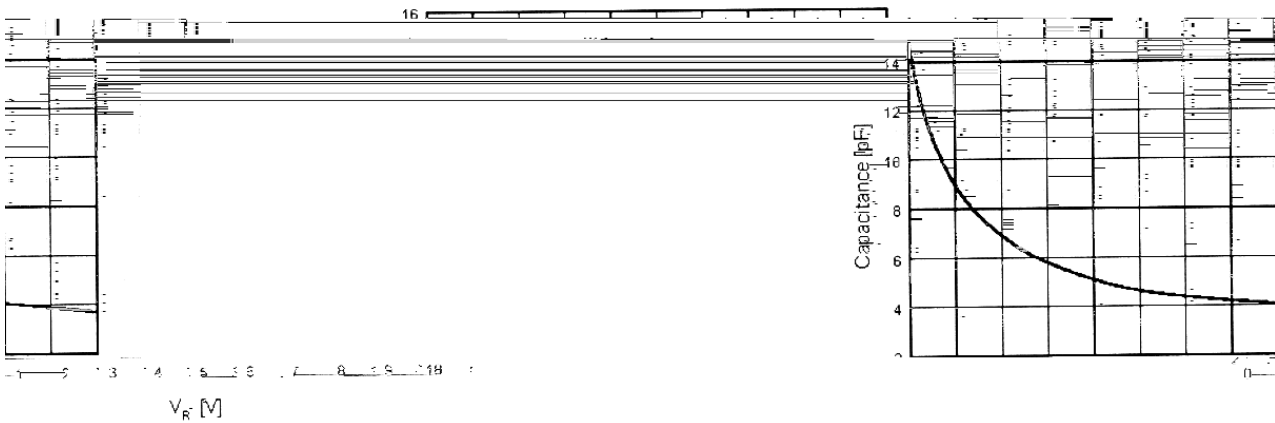
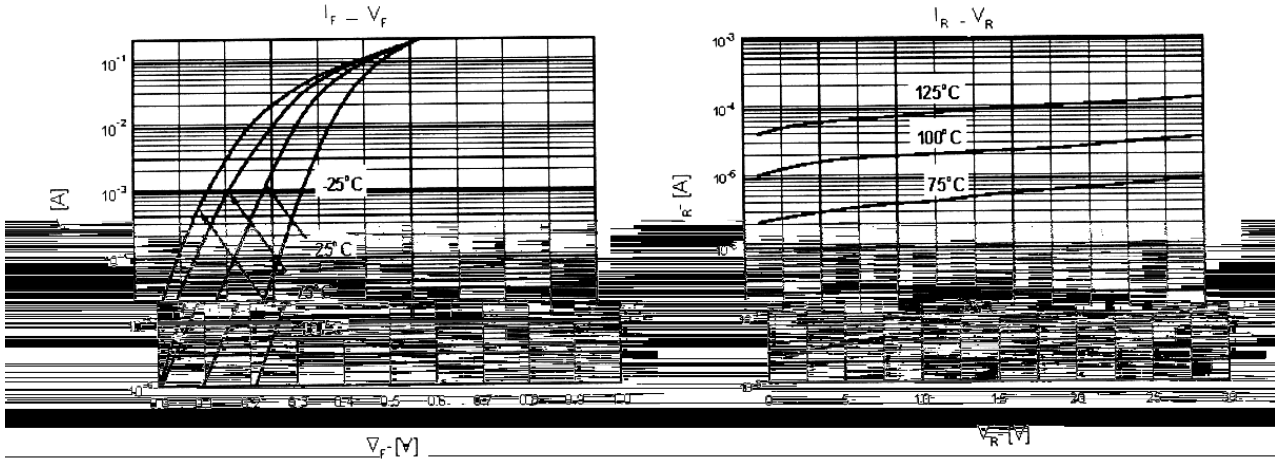
Parameter	Symbol	Rating	Unit
Repetitive Reverse Voltage	V_{RRM}	30	V
Average Rectified Forward Current	$I_{F(AV)}$	300	mA
Non-repetitive Peak Forward Surge Current	I_{FSM}	1	A
Power Dissipation	P_{tot}	230	mW
Thermal Resistance, Junction to Ambient	R_{JA}	550	°C/W
Junction Temperature	T_j	150	°C
Storage Temperature Range	T_{stg}	-55~150	°C

电性能参数 / Electrical Characteristics(Ta=25°C)

Parameter	Symbol	Test Conditions	Min	Typ	Max	Unit
Breakdown Voltage	V_R	$I_R=10\mu A$	30			V
Forward Voltage	V_F	$I_F=0.1mA$			240	mV
		$I_F=1mA$			320	mV
		$I_F=10mA$			400	mV
		$I_F=30mA$			500	mV
		$I_F=100mA$			0.9	V
Instantaneous Reverse Current Total Capacitance	I_R	$V_R=30V \quad T_a=25^\circ C$			1	μA
		$V_R=30V \quad T_a=100^\circ C$			100	μA
Total Capacitance	C_T	$V_R=1V \quad f=1MHz$			10	pF
Reverse Recovery Time	t_{rr}	$I_F=I_R=10mA \quad I_{RR}=1mA$ $R_L=100$			5	ns



电参数曲线图 / Electrical Characteristic Curve

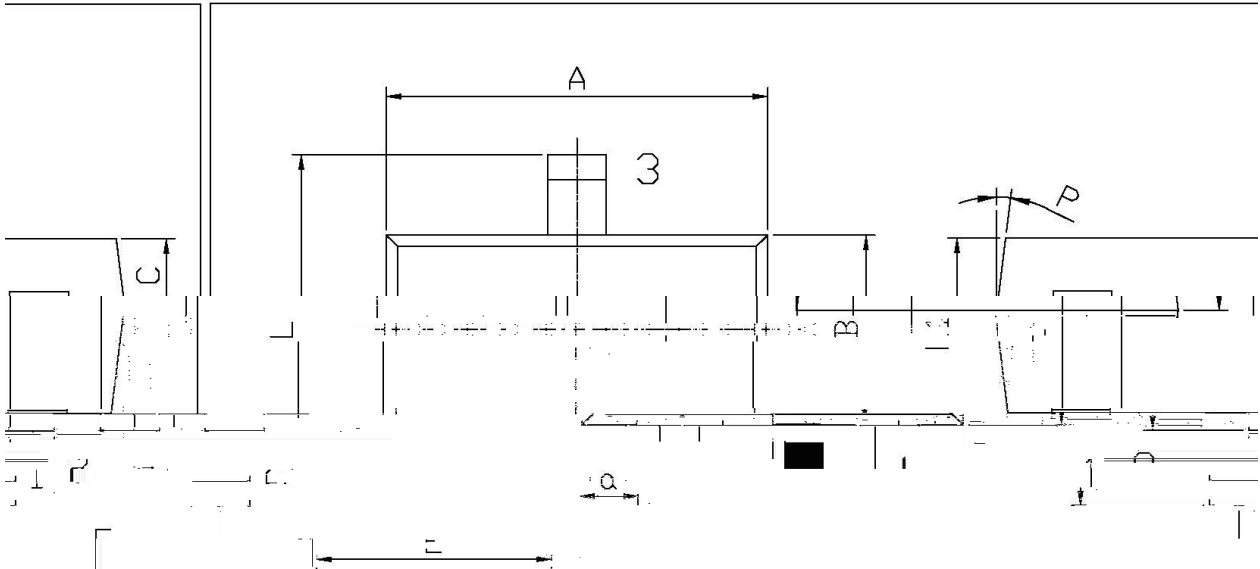




外形尺寸图 / Package Dimensions

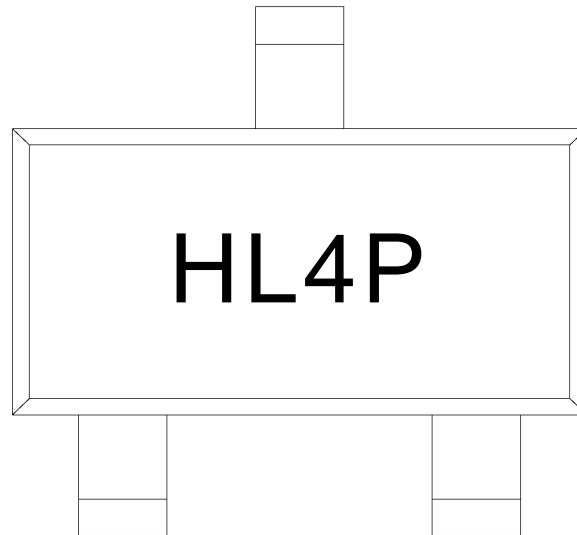
SOT-323

单位: mm



Symbol	Dimensions In Millimeters		Symbol	Dimensions In Millimeters	
	Min	Max		Min	Max
A	1.95	2.35	C	0.30	0.50
B	2.00	2.2	L	0.85	1.15
E	1.20	1.40	a	0.20	0.40
B	1.05	1.35	P	7°	

印章说明 / Marking Instructions



H

L4P

Note:

H: Company Code

L4P: Product Type



回流焊温度曲线图(无铅) / Temperature Profile for IR Reflow Soldering(Pb-Free)

Note:

- | | | | |
|---|---------|-----------|--|
| 1 | 150 180 | 60 90sec; | 1.Preheating:150~180°C, Time:60~90sec. |
| 2 | 245±5 | 5±0.5sec; | 2.Peak Temp.:245±5°C, Duration:5±0.5sec. |
| 3 | 2 | 10°C/sec. | 3. Cooling Speed: 2~10°C/sec. |

耐焊接热试验条件 / Resistance to Soldering Heat Test Conditions

260±5°C 10±1 sec. Temp.:260±5°C Time:10±1 sec

包装规格 / Packaging SPEC.

/ REEL

Package Type	Units/Reel 只/卷盘	Reels/	Units	Dimension	(unit mm ³)
--------------	--------------------	--------	-------	-----------	-------------------------